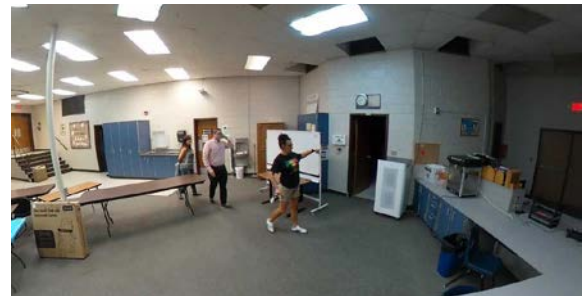


LOOK BACK

- **June 12, 2024** On-site Coordination with MDU and engineers
- **June 14, 2024** ICON and Executive Design Committee Schematic Design Presentation
- **June 27 & 28, 2024** Architectural site investigation
- **July 22 & 23, 2024** DD User Groups - All school areas
- **July 29, 2024** GoeTechnical RFP issued
- **July 29, 2024** Metal Panel Samples Ordered
- **July 31, 2024** Brick Samples Ordered

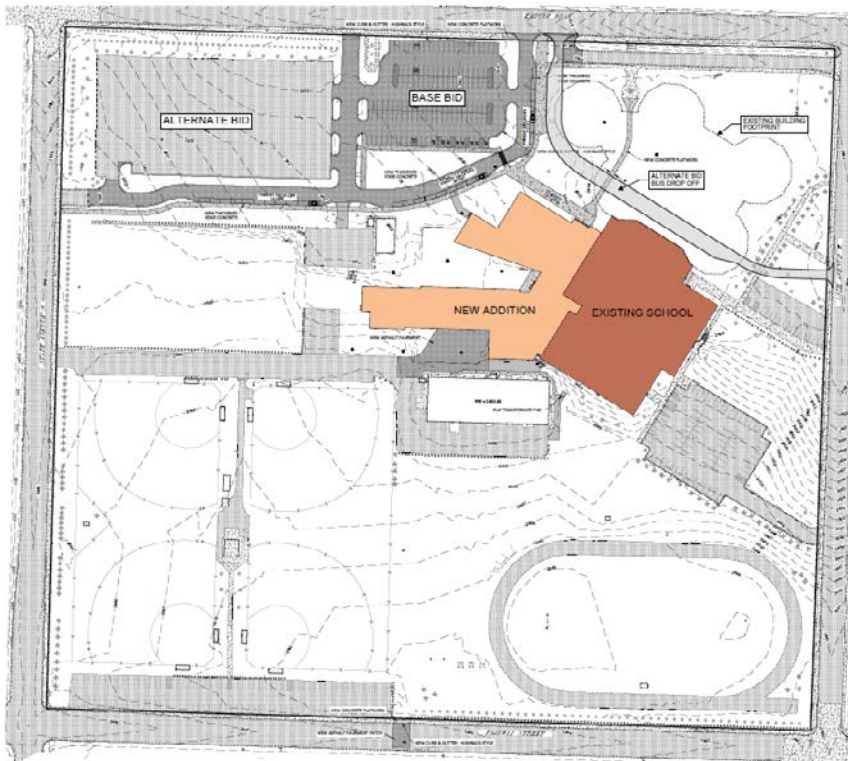
LOOK FORWARD

- **August 5, 2024** GeoTechnical RFP Due
- **August 5, 2024** School Board Retreat Presentation
- **August 7, 2024** Precast Concrete Sample Tour
- **August 26 & 27, 2024** Teacher User Groups
- **August 27, 2024** Finish review with district



User Group Tours

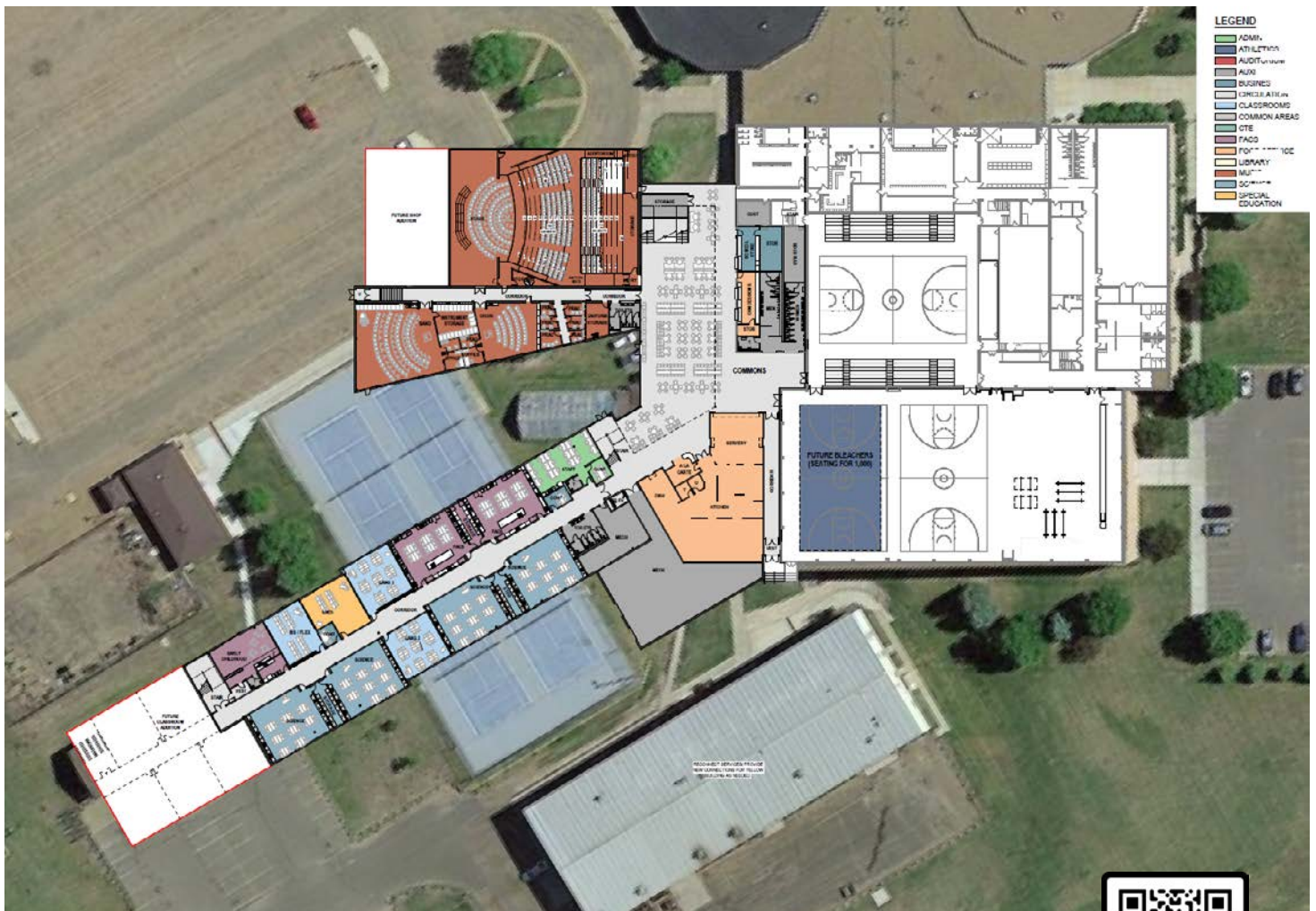




Site Plan

PROJECT HIGHLIGHTS

- Approx. 81,000 sf of demolition
- Approx 88,000 sf of existing building with approx 22,000 sf of remaining building renovation
- Approx 104,000 sf of new construction
- Space for 1,400 students
- 8 new science labs
- 28 educational space
- Student commons/ lunchroom
- 600 Capacity theater
- Natural light for all new student spaces



Floor Plan | Level 1 of 3



SCAN ME

For more project progress updates, visit designwithicon.com/dickinson or scan the QR Code: